



## —— INNOVATIONS - FALL 2018



**The 46  
Lagoon new model**



**Pack Communication  
Inmarsat for Lagoon**



**Red Paddle Co  
New partnership**

## PRESS KIT - FALL 2018

# The new 46 from Lagoon

Climb aboard a catamaran that brings together all of the elements for which Lagoon is so renowned, then add an improved helm station, an updated cockpit design, optimised ergonomics and Lagoon's next-generation DNA. The result is a catamaran which is the essence of freedom, innovation and luxury.

Live and relax in a light-bathed interior that boasts unrivalled comfort and space for movement. Enjoy the practicality of a fully-equipped U-shaped kitchen and discover a cockpit designed on the principle of pure comfort, then settle into your quarters in a gorgeous refined cabin.

The elegant interior by Nauta Design gives way to a comfortable deck that has been revisited by marine architects VPLP, and which features an aft-stepped mast and a FlatWinder electric furler which greatly eases use of the mainsail. With its unmatched capacity for smooth and rewarding sailing, its beautiful design and its warm and welcoming atmosphere, the 46 can't fail to please.



## INNOVATIONS

  
LAGOON

# PACK COMMUNICATION INMARSAT FOR LAGOON

Being reachable and being able to contact anyone, at sea, has been possible for many years now. But doing so in an unlimited way, without extra costs, is unheard of! With the world leader in satellite communications and its exclusive supplier Advanced Tracking, Lagoon has just created a "Pack communication Inmarsat for Lagoon". How innovative!

This embarks complete equipment dedicated to all the voice and data communications. Thanks to this new offer, exclusive to *Club Lagoon* members, it is now possible to call, receive emails, browse the internet, post on social media, send text messages, check applications, have free access to emergency calls... but the true innovation is the unlimited aspect of this contract, for two years, with ultra-competitive price! This full offer includes a satellite system, a Wi-Fi antenna and a GSM router to meet all your needs: whether the boat is at harbour, along the coast or in the middle of the ocean, you'll never lose touch.



This solution is reliable, easy to use and flexible; it offers connectivity at an affordable price for all boats: 100 KBPS with satellite and GSM 4G network use or the available Wi-Fi networks.

The Fleet One satellite antenna was designed for both amateur sailors and adventurers who need the guarantee of flawless voice and data connection, an assistance service and strong liaisons, whatever the weather and sea! The 4 Inmarsat satellites cover 99.9 % of the surface of the globe.

For more information on the "Pack communication Inmarsat for Lagoon", contact the exclusive retailer: [commercial@advanced-tracking.com](mailto:commercial@advanced-tracking.com).

## INNOVATIONS

  
LAGOON



## NEWS - FALL 2018



The 50  
Multihull of the year



RED PADDLE CO  
New partnership



LAGOON ESCAPADES  
Around the world



## THE 50, Multiull of the year

During the Multihull boat show, the 50 won the prestigious award of the Multihull of the Year 2018, in the multihulls 40 to 50 feet category.

The election, organized by the magazine Multihulls World and the International Multihull boat show of La Grande Motte, gave the possibility for the sailing lovers to vote for their favorite boats through several categories.

Opens to the public, this election has been a true success with more than 11 000 voters. It was such a plebiscite for Lagoon that we would like to say: a big thank you, to all our Fans!

[For more information about the 50, click here!](#)



NEWS

  
LAGOON

## RED PADDLE CO New partnership

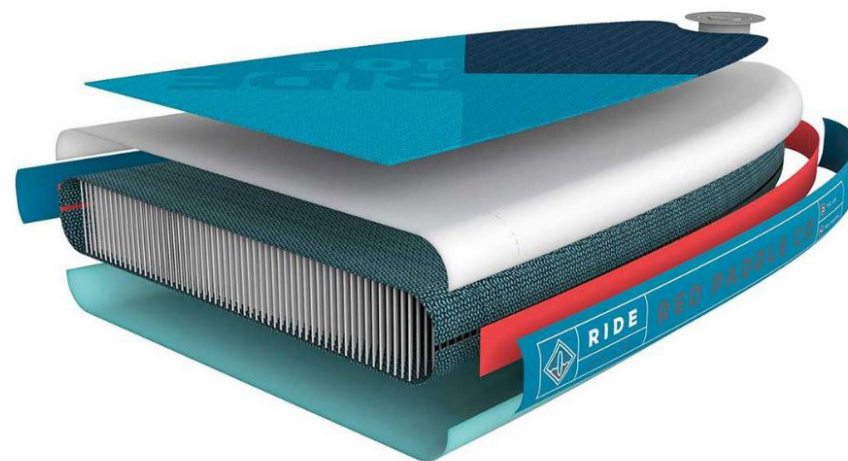
Fancy a sporty outing, a moment to relax, or just good old family fun?

Red Paddle Co will become your mooring ally! When Lagoon looked for a partner in the Stand Up Paddle field, the turquoise brand naturally sought out the world leader in inflatable paddleboards.

In 2008, when the first SUP emerged, Red Paddle Co created an inflatable paddle that was just as efficient as the hard boards, thanks to the MSL (Monocoque Structural Laminate) Fusion.

With this process, you get a board for all sorts, which is easy to transport thanks to its lightweight and adapted travel bag, and easy to inflate and store. Using innovative materials, the care brought to rigorous product testing, the exceptional customer service and two year guarantee on all boards make it the most popular SUP brand in the world.

Lagoon and Red Paddle Co offer a novelty in 2018: the 15'0" Voyager Tandem Lagoon board, perfect family board for explorers who want to discover alone, in pairs, in threes (!) the most far-removed spots. Using a paddle offers new worlds of adventure to mooring: it's when you share pleasure and conviviality that you enjoy them the most. These boards rime with quality, high performance and pleasure.



## NEWS

  
LAGOON



# LAGOON ESCAPADES around the world

This year, the number of Escapades increased:

The Australian team, organized an awesome second Escapade in Lake Macquarie. There was excitement when the Lagoon catamarans met a monohull race on the lake! TMG offered a BBQ on the shore at the beautiful Chateau Harding, and organized very funny Olympics games with different challenges. [For more information!](#)

The Nautika Centar Nava team organized an exceptional Lagoon Escapade! This was the 7th Croatian edition of the Lagoon Escapades. On the menu: sun, fun and sailing into the Maslinica area and Vis Island. The owners took part in a friendly regatta, then in stand up paddle runs before enjoying unlimited swimming! [For more information!](#)

I hope you did not miss the first Lagoon Escapade in the Philippines! Europa Yachts team, put every effort to create a great even at Mindoro Island. The sailing across the Verde Island passage, to reach a beautiful private cove, be truly appreciated by the owners. A piece of paradise: with music, fresh fruit juices, and crystal clear water. The owners even got the chance to enjoy a helicopter flight above the island! [For more information!](#)

In brief, these three events were a true celebration of the Lagoon attitude!



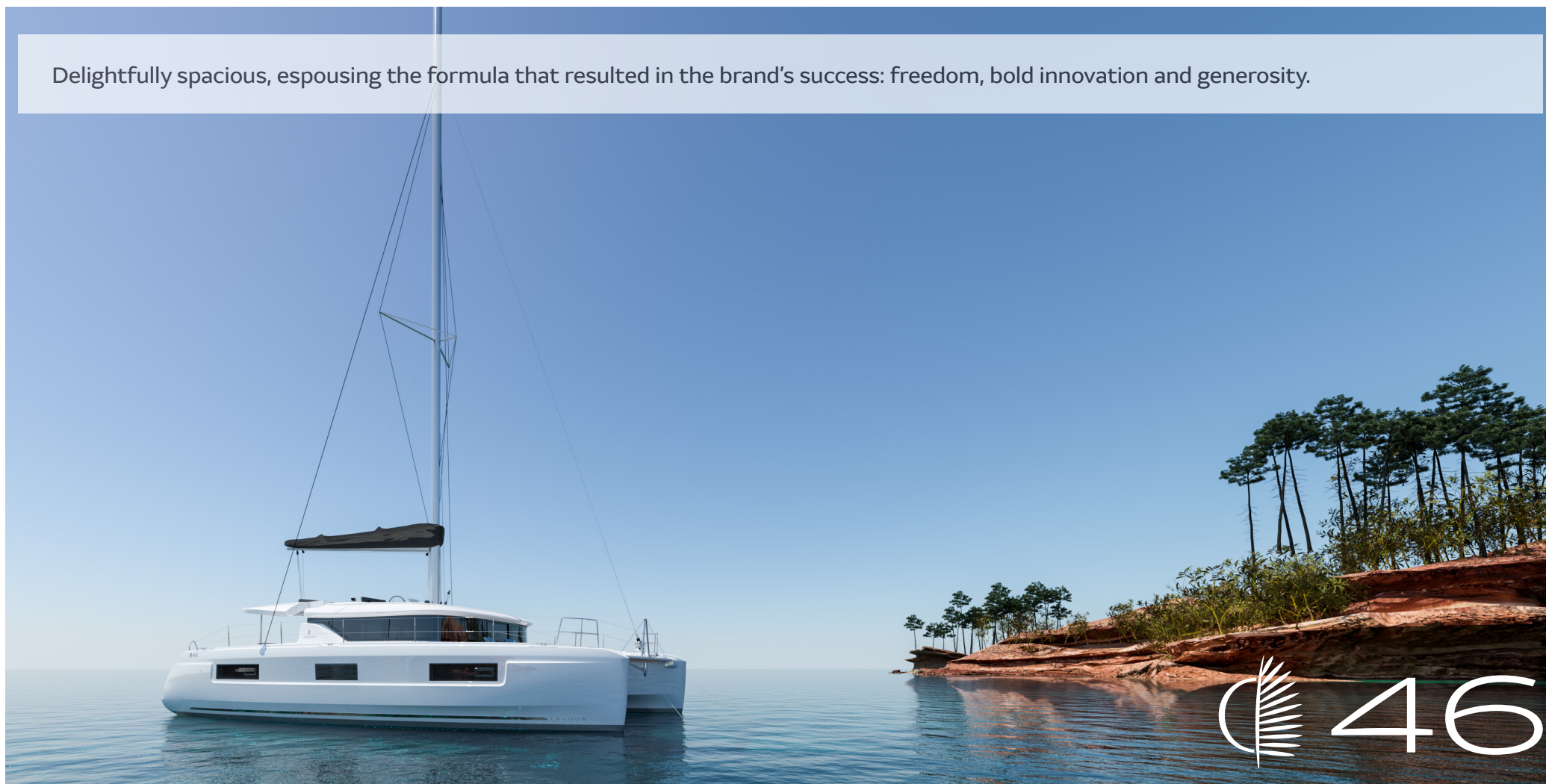
## NEWS

  
LAGOON



# Le 46

Delightfully spacious, espousing the formula that resulted in the brand's success: freedom, bold innovation and generosity.



**NEW FOR 2019**

  
LAGOON

## 46 Exterior and Interior : harmony on board

### Exterior :

On the 46, the VPLP Design consultancy offers both a deep and welcoming forward cockpit, a spacious aft cockpit and a versatile flybridge, perfectly combining handling and relaxation areas. Reaching the flybridge is fast and easy thanks to the two accesses: one by way of the aft cockpit, the other from the deck. On the flybridge, the helming station affords both protection and visibility. For greater comfort, a choice of sun protection is available: a folding hood or a rigid bimini.

The 46 promotes relaxation, with large modular sunbeds and quality equipment. It is also synonymous with freedom, thanks to a comprehensive galley on deck, enabling a high level of hospitality.

Two steps from the saloon, access to the sea is wide, convenient and safe.



### Interior :

Designed by Nauta Design, the interior features a functional but elegant style. The VIP cabin and owner's spaces are generously dimensioned and fitted with an island bed for optimal comfort. Emphasis was placed on neat finishes and interior brightness to enhance the quality of life on board.

The interior is an extension of the exterior spaces thanks to the abundance of portholes and windows.

The forward cockpit and the saloon are connected by means of retractable glazing, providing a sense of boundless space. As for the single-level aft cockpit, it enables natural access from the transom skirts to the saloon by way of the cockpit.

# NEW FOR 2019

  
LAGOON

## 46 Enjoyable sailing

### Relaxed, enjoyable sailing :

The 46 is a high-performance, seaworthy boat. Representative of the new Lagoon DNA, she provides:

- a larger sail plan for a better of sail surface/displacement ratio,
- a mast stepped further aft, arising directly from VPLP's racing experience,
- a shorter boom, a self-tacking jib and an electric captive winch for the mainsail for ease of handling,
- a large fore-triangle for a greater choice of headsails and greater efficiency.

### Preliminary specifications :

Length over all : 45'11"  
Beam : 25'10"  
Draft : 4'3"  
Mast clearance : 78'8"

Sail area : 1507 sq ft  
Square top mainsail : 865 sq ft  
Self tacking jib : 543 sq ft



# NEW FOR 2019

  
LAGOON



# WELCOME TO THE LAGOON BRAND



# Lagoon, world leader in catamaran cruisers



Lagoon has built nearly 4,700 sail or motor-powered catamarans, offering a range of 25 different models. Since 2003, such dynamic output has raised the brand to the rank of world leader in building catamaran cruisers:

The most successful models include:

the 380: over 862 units

the 400: over 556 units

the 42 : 327 in 2 years !

the 450: over 746 units

the 620: nearly 144 units

the 630 MY: 43 units sold already!

the SEVENTY 7 & 8 : already 7 units!

## The Lagoon brand





# Lagoon Escapades

Lagoon Escapades are proving as popular as ever among owners, who fully enjoy the Lagoon attitude on these occasions. The idea is to propose to participants an explosive cocktail of good humour, meeting new people, sailing and festivities, always in a magical setting!

Lagoon dealers stayed true to their reputation, once again organising an unforgettable time for their customers.



- February 23 to 25, 2018 - Australia - The Multihull Group (Lagoon dealer in Australia)
- April 7 to 8, 2018 - Philippines - Europa Yachts (Lagoon dealer in Philippines)
- April 28 to May 01, 2018 - Croatia- Nautica Centar Nava (Lagoon dealer in Croatia)
- May 26 to 27, 2018 - Portugal - Sea Way (Lagoon dealer in Portugal)
- July 6 to 8, 2018 - Turkey - Tez Marin (Lagoon dealer in Turkey)
- July 19 to 20, 2018 - Australia - The Multihull Group (Lagoon dealer in Australia)
- July 20 to 22, 2018 - USA - Naos Yachting (Lagoon dealer in California)
- August 25 to 26, 2018 - Thailand - Simpson Marine (Lagoon dealer in Thailand)



Australia(Lake Macquarie) 2018



Philippines (Mindoro island) 2018



Croatia (Maslinica area) 2018



Portugal (Lisbonne) 2018

## The Lagoon brand





# Lagoon Boutique

Lagoon is thrilled to show you its new online boutique, opens to everybody!

The Lagoon Attitude inspires each element on the boutique: quality, elegance, and sailor's spirit. You would like to wear Lagoon colors or make a gift? The Lagoon boutique offers you equipment, Lagoon model scales and products with your favorite brand's logo!

The boutique is open to *Club Lagoon* members only. Luckily, the access to the club is free and for everybody, even the non-owners! To become a *Club Lagoon* member, in 2 minutes, [click here](https://lagoon-boutique.com/).

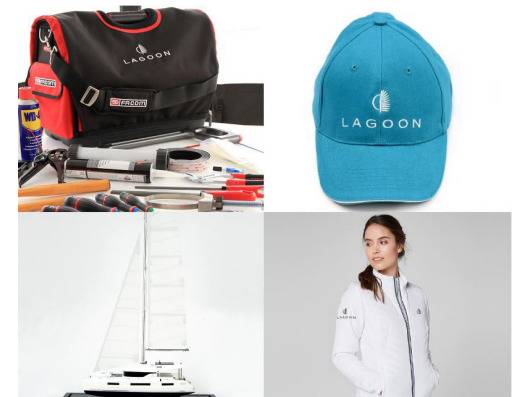
The *Club Lagoon* has been designed for ea lovers :

The Fan status will give an exclusive access to the boutique and will allow to save and share website pictures, videos, save and modify boat configurations.

The Lagoon owners can register to the club thanks to the Owner statut which gives them the opportunity to discover exceptional prices in marinas around the world and different shops.



<https://lagoon-boutique.com/>



## The Lagoon brand



# Club Lagoon



Launched in December 2012 at the Paris boat show, *Club Lagoon* immediately seduced the owners of Lagoon catamarans. Since then, we have been constantly seeking new partners to provide our customers with benefits they will really appreciate!

Today, *Club Lagoon* is:

- more than 700 members
- 9 partners: Multicoques Mag, Incidences, Pantaenius, the online sailing learning website NauticEd, Canard Duchêne champagne, Advanced Tracking, specialised in the geolocation of objects and people, Tiwal, builder of inflatable sailing dinghies and Gowze, the elegant electric folding bicycle, and Highfield, the tender specialist.
- 11 marinas: Real Club Nautico de Vigo (Spain), Cala dei Sardi (Italy), Marina Genova Aeroporto (Italy), Marina Kremik (Croatia), Marina de Tribunj (Croatia), Marina di Cala del Sole (Sicile), Marina Salinas de Torrevieja (Espagne), Marina Sant Carles (Spain), Marina Saïdia (Morocco), Marina Capo d'Orlando (Sicily), Marina de Saïdia (Maroc).
- a shop with an exclusive range of *Club Lagoon* clothing and discounts on Lagoon products,
- technical maintenance and user documents for boats,
- Lagoon Escapades.

<https://www.cata-lagoon.com/en/login>



## The Lagoon brand



# — THE LAGOON BRAND

## Lagoon: sound experience gained over 30 years

Since it was founded in 1984, Lagoon has developed outstanding expertise in building catamarans: making the most of the available space to ensure exceptional comfort, great design and the highest quality, combined with listening carefully to what the customers want, have been the key factors in establishing and building the brand's reputation.

As a world leader in the sector since 2003 (and over 4,700 boats built to date), all the hulls in the Lagoon range are designed by Marc Van Peteghem and Vincent Lauriot-Prévost (VPLP design), naval architects whose achievements in designing multihulls are unequalled.

Lagoon offers the most comprehensive range of sailing catamaran cruisers on the market, with 11 models, including 2 new models, the 40 and the 50, being showcased at Cannes this year.

There are two models in Lagoon's Motor Yacht range: the 630 MY launched in 2015 and the brand new SEVENTY 8 launched in 2018.

Lagoon's sailing and motor-powered ranges are available through a worldwide network of 85 specialised and passionate dealers. This network grows with each passing year and Lagoon has a strong presence in emerging markets such as South America and China.





# 12 sailing and 2 motor yachts: a comprehensive range



380 Annapolis



40 Cannes / Genova /  
La Rochelle / Annapolis /  
Barcelona



42 Cannes / La  
Rochelle / Annapolis /  
Barcelona



450 S



450 F Cannes / Annapolis



46



50 Cannes / Annapolis /  
Barcelona



52 S



52 F Cannes



560



620 Genova



SEVENTY 7 Cannes



630 MY  
Cannes / Barcelona



SEVENTY 8

## The Lagoon brand

  
LAGOON

# 380



Launched in 1999 and over 800 units built so far, the 380 is undoubtedly the most popular catamaran of this size in the world, with more units sold than any other brand. She's comfortable, fast and seaworthy, and is available in two versions (3- or 4- cabin layout), and can be seen sailing all over the world.

Year launched	1999
Overall length	37'11"
Length at Waterline	36'1"
Beam overall	21'5"
Naval architects	VPLP
Interior design	X.Faÿ
EC certification	A 8; B 10; C 12



Saloon and cockpit



3-cabin version



4-cabin version

**SAILING YACHTS:** 380 | 40 | 42 | 450 S | 450 F | 46 | 50 | 52 S | 52 F | 560 | 620 | SEVENTY 7

**MOTOR YACHTS:** 630 MY | SEVENTY 8



# 40

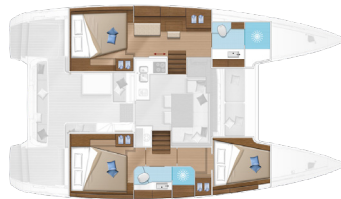


With her new visual identity, the 40 immediately stands out. While faithful to the image of Lagoon's «DNA», a new style is born: an individual, streamlined and accomplished design depicts her large portholes and panoramic view. This creates a refined and high-performance unit, emphasised by the chamfer running from the bow to the stern. A new generation Lagoon, recognisable at first sight.

Launched	2017
Length overall	38'
Beam overall	22'2"
Architects	VPLP - Le Quément
CE certification	A 10 ; B 12 ; C 16 ; D 20



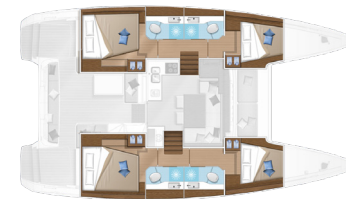
Saloon and cockpit



3-cabin version



4-cabin version, 2 bathrooms



4-cabin version, 4 bathrooms

**SAILING YACHTS :** 380 | 40 | 42 | 450 S | 450 F | 46 | 50 | 52 S | 52 F | 560 | 620 | SEVENTY 7

**MOTOR YACHTS :** 630 MY | SEVENTY 8



# 42



An elegant silhouette, flowing curves which, by virtue of a noticeable acceleration of the lines in the bows and in the new coachroof design, emphasise the powerful and dynamic nature of this new model...

A VPLP design naturally, a guarantee of performance under sail!

Launched	2016
Length overall	42'
Length waterline	41'
Beam overall	25'3"
Architects	VPLP - Le Quément
CE certification	A 12 ; B 14 ; C 20 ; D 30



Saloon and cockpit



3-cabin version



4-cabin version

**SAILING YACHTS :** 380 | 40 | 42 | 450 S | 450 F | 46 | 50 | 52 S | 52 F | 560 | 620 | SEVENTY 7

**MOTOR YACHTS :** 630 MY | SEVENTY 8

# 450 S



The 450 S revisits the FlyBridge version of the 450: with a more conventional and secure helm station, it provides more direct communication with the crew in the cockpit, as well as a lowered rig. This further reduces pitching and makes access to the boom easier, whilst keeping the same sail surface. As for the interiors, Lagoon asked Nauta to focus even more on ergonomics, comfort and space.



Launched	2016
Length overall	45'10"
Length waterline	43'11"
Beam overall	25'10"
Naval architects	VPLP
Interior design	Nauta Design
CE certification	A 12; B 14; C 20; D 30



Saloon and cockpit



3-cabin version



4-cabin version

**SAILING YACHTS:** 380 | 40 | 42 | 450 S | 450 F | 46 | 50 | 52 S | 52 F | 560 | 620 | SEVENTY 7

**MOTOR YACHTS:** 630 MY | SEVENTY 8

# 450 F



A real success story, with over 500 units built since Autumn 2010, the 450 has the benefit of some major advances in terms of safety, performance and life onboard: improved safety for access skirts, a larger cockpit and easier access to the helm station... plus a fabulous sun lounge on the flybridge. The new interiors designed by Nauta for the 450 S are, naturally, available for the 450 FlyBridge version, combining space, elegance and comfort.

Launched	2010
Length overall	45'10"
Length at Waterline	43'11"
Beam overall	25'10"
Naval architects	VPLP
Interior design	Nauta Design
EC certification	A 12; B 14; C 20; D 30



Saloon and cockpit



3-cabin version



4-cabin version

**SAILING YACHTS:** 380 | 40 | 42 | 450 S | 450 F | 46 | 50 | 52 S | 52 F | 560 | 620 | SEVENTY 7

**MOTOR YACHTS:** 630 MY | SEVENTY 8



# 46



The 46 is a new generation Lagoon catamaran, espousing the formula that resulted in the brand's success: freedom, bold innovation and generosity. Enjoyment of the sweetness of life was the central theme in this catamaran design, evidenced by the elegant lines, the unrivalled brightness and the generous, interconnected spaces. A true playground for bons viveurs!

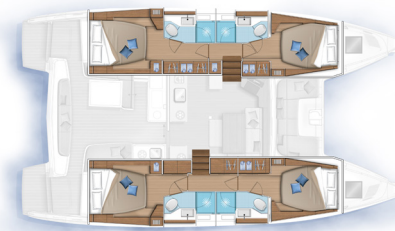
Launched	2018
Length overall	45'11"
Length at Waterline	45'2"
Beam overall	25'10"
Naval architects	VPLP
Interior design	Nauta Design
EC certification	A 12; B 14; C 20; D 30



Saloon and cockpit



3-cabin version



4-cabin version

**SAILING YACHTS:** 380 | 40 | 42 | 450 S | 450 F | 46 | 50 | 52 S | 52 F | 560 | 620 | SEVENTY 7

**MOTOR YACHTS:** 630 MY | SEVENTY 8



With her new visual identity, rigging and hull design, she provides increased performance, comprising a unique brand signature. Indeed, the 50's elegance seduces thanks to the bevelled shape of her hulls, generous volumes and panoramic views, more than ever enhanced. With unparalleled accommodation possibilities, this new model is available in three, four or even... six cabins!

Launched	2017
Length overall	48'5"
Beam overall	26'7"
Architects	VPLP - Le Quément
CE certification	A 14 ; B 14 ; C 16 ; D 30



Saloon and cockpit



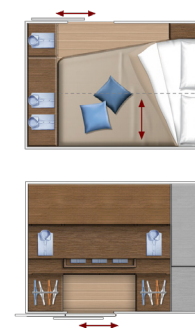
3-cabin version



4-cabin version



6-cabin version



Central cabin  
option

Dressing room  
option

**SAILING YACHTS :** 380 | 40 | 42 | 450 S | 450 F | 46 | 50 | 52 S | 52 F | 560 | 620 | SEVENTY 7

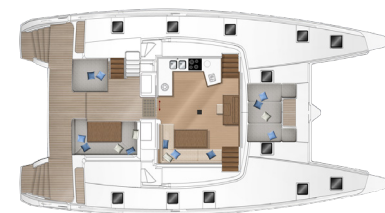
**MOTOR YACHTS :** 630 MY | SEVENTY 8

# 52 S



The 52 S revisits the *FlyBridge* version of the 52: with a more conventional and secure helm station, it provides more direct communication with the crew in the cockpit, as well as a lowered rig. This further reduces pitching and makes access to the boom easier, whilst keeping the same sail surface. As for the interiors, Lagoon asked Nauta to focus even more on ergonomics, comfort, space and luxury.

Launched	2016
Length overall	52'
Length waterline	50'10"
Beam overall	28'3"
Naval architects	VPLP
Interior design	Nauta Design
CE certification	A 14; B 14; C 16; D 30



Saloon and cockpit



3-cabin version



4-cabin version



5-cabin version



6-cabin version

**SAILING YACHTS:** 380 | 40 | 42 | 450 S | 450 F | 46 | 50 | 52 S | 52 F | 560 | 620 | SEVENTY 7

**MOTOR YACHTS:** 630 MY | SEVENTY 8

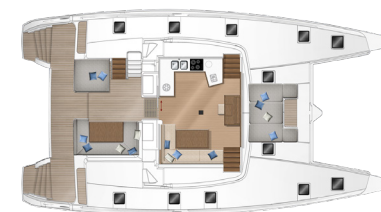


# 52 F



The 52 F marks a new phase in the design of cruising catamarans. It has diamond-shaped vertical bows, bevelled hulls, a 'suspended' deckhouse and streamlined rigging, but its originality does not stop at its outward appearance or even its internal layout. The sometimes radical choices that we made in designing this boat reflect our desire to remain faithful to what we believe in, whether in terms of style, comfort, safety, user-friendliness or – it goes without saying – performance under sail.

Launched	2012
Length overall	52'
Length waterline	50'10"
Beam overall	28'3"
Naval architects	VPLP
Interior design	Nauta Design
CE certification	A 14; B 14; C 16; D 30



Saloon and cockpit



3-cabin version



4-cabin version



5-cabin version



6-cabin version

**SAILING YACHTS:** 380 | 40 | 42 | 450 S | 450 F | 46 | 50 | 52 S | **52 F** | 560 | 620 | SEVENTY 7

**MOTOR YACHTS:** 630 MY | SEVENTY 8

# 560



The 560 gave Lagoon a strong lead in terms of comfort, ergonomics and style. The 2014 version offers an additional choice of layouts which are unequalled for this size of catamaran: up to 5 fully independent cabins and the choice between a central galley (in the saloon) and a lateral galley (in the port hull). The 560 offers a spectacular saloon, whatever the chosen layout. The choice of materials has been given particular attention, with a teak or oak finish (option) and several inside atmospheres created by Nautica.

Launched	2010
Length overall	56'
Length waterline	54'
Beam overall	31'
Naval architects	VPLP
Interior design	Nautica Design
CE certification	A 14; B 14; C 16; D 30



Saloon and cockpit



Saloon and cockpit central galley



4-cabin version with central galley



5-cabin version with central galley



4-cabin version with lateral galley

**SAILING YACHTS:** 380 | 40 | 42 | 450 S | 450 F | 46 | 50 | 52 S | 52 F | **560** | 620 | SEVENTY 7

**MOTOR YACHTS:** 630 MY | SEVENTY 8

# 620



The 620 - a best-seller in the over-60' catamaran category, with over 100 boats built - comes with either a lateral or central galley and layouts for 4, 5 or 6 double cabins. In addition, the atmospheres created by Nauta offer complete interior layout packages that stylishly combine different types of wood, upholstery and linings... and all the little details that make this boat a unique catamaran.

Launched	2009
Length overall	62'
Length waterline	59'9"
Beam overall	32'10"
Naval architects	VPLP
Interior design	Nauta Design
CE certification	A 14; B 14; C 16; D 30



Saloon and cockpit central galley



4-cabin version with lateral galley



5-cabin version with lateral galley



5-cabin version with central galley



6-cabin version with central galley

**SAILING YACHTS:** 380 | 40 | 42 | 450 S | 450 F | 46 | 50 | 52 S | 52 F | 560 | **620** | SEVENTY 7

**MOTOR YACHTS:** 630 MY | SEVENTY 8



# SEVENTY7

## SAILING YACHT

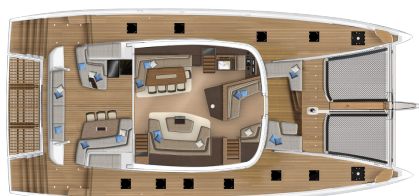


This new Lagoon had to meet the requirements of our owners and clients that are above the qualities that we already offer in our range of big catamarans.

Lagoon imagined, with the help of our design office and the interior and exterior designers, a world in which elegance, conviviality, living space, freedom of movement are all presents ...

This new catamaran, a masterpiece of innovation, offer unique services to this day at Lagoon.

Launched	2016	Architects	VPLP
Length overall	78'	Interior design	Nauta Design
Length at waterline	75'8"	Certification CE	A : 14 ; B : 18 ; C : 24 ; D : 40
Beam	36'1"		



Saloon and cockpit



3 cabins - Aft galley version  
Private swim platform option



4 cabins - Forward galley version



5 cabins - Forward galley version

SAILING YACHTS : 380 | 40 | 42 | 450 S | 450 F | 46 | 50 | 52 S | 52 F | 560 | 620 | SEVENTY7

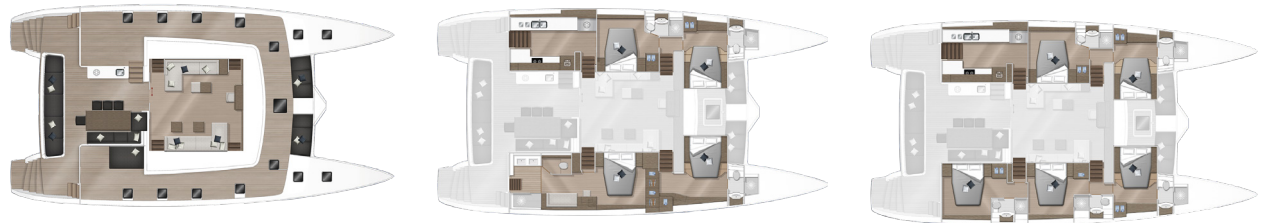
MOTOR YACHTS : 630 MY | SEVENTY8

# 630 MY

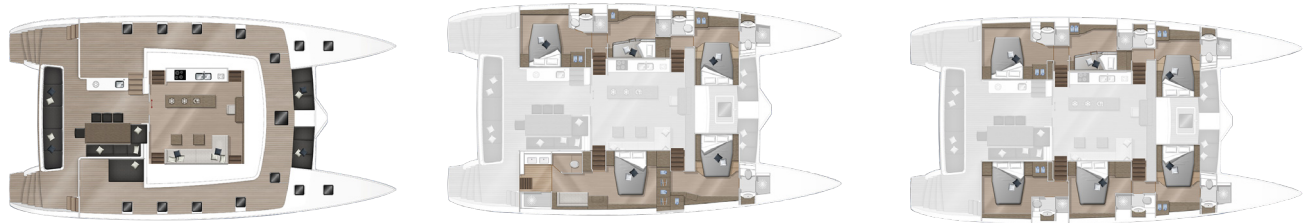


Length overall	64'
Length waterline	62'6"
Maximum beam	32'10"
Draft	4'3"
Standard engines	2 x 260 to 2 x 300 HP CR
Fuel capacity	806 US Gal.
Fresh water capacity	254 US Gal.
Naval architects	VPLP
Interior design	Nauta Design
EC certification	A 14 ; B 14 ; C 16 ; D 40

This bluewater cruising motor catamaran, which marked Lagoon's big comeback to the Motor Yacht sector, has a strong personality: while her exceptional seagoing qualities and outstanding range make her ideal for undertaking long ocean passages with complete peace of mind, the comfort and luxury onboard also make her a superb home on the water, whether moored or at sea. Her 20m<sup>2</sup> rigid foredeck creates a new space for relaxing as well as affording exceptional views – a place to be together, whatever the time of day.



Saloon and cockpit lateral galley 4-cabin version with lateral galley 5-cabin version with lateral galley



Saloon and cockpit central galley 5-cabin version with central galley 6-cabin version with central galley

SAILING YACHTS : 380 | 40 | 42 | 450 S | 450 F | 46 | 50 | 52 S | 52 F | 560 | 620 | SEVENTY 7

MOTOR YACHTS : 630 MY | SEVENTY 8

# 630 MY

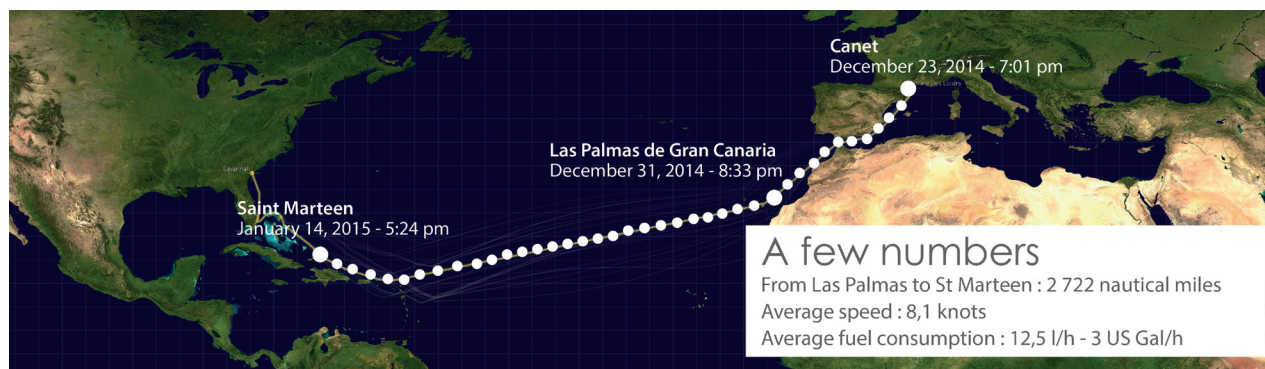
## ***The transatlantic crossing***

When she was first launched, the 630 MY crossed the Atlantic to be showcased at the Miami International Boat Show, where she created quite a stir among motor yacht bluewater cruising aficionados! During this full-scale test, the crew were able to judge for themselves the standards of luxury and comfort on board, both interior and exterior, and, more specifically, her outstanding autonomy, powered by her two fuel-efficient Volvo engines combined with the Long Range option: extra tanks providing fuel capacity of 4,800l.



**FUEL CONSUMPTION**  
**(wind <10 knots, chop 20 to 50 cm)**

**2 x VOLVO 300 HP**



RPM	SOG	(L/H)	(L/M)
1 000	5	4,7	0,94
1 600	8	12	1,50
2 400	12	42	3,50
3 500	17	115	6,76

SAILING YACHTS : 380 | 40 | 42 | 450 S | 450 F | 46 | 50 | 52 S | 52 F | 560 | 620 | SEVENTY 7

MOTOR YACHTS : 630 MY | SEVENTY 8



# SEVENTY8

## MOTOR YACHT



Designed by some of the top naval architects in the world, VPLP, Patrick Le Quément and Nauta Design, the SEVENTY 8 is over 24 metres LOA and thus marks an important step for Lagoon into a motor yacht world in which elegance and refinement are the watchwords. The timeless elegance of her silhouette, combined with the harmonious shape of the coachroof, and the large interior and exterior spaces create a world in which the word compromise does not exist, and where real luxury is space.

Launched	2017	Naval Architects	VPLP
Overall length	78'1"	Interior design	Nauta Design
Length at Waterline	77'5"	EC certification	A: 14; B: 18; C: 24; D: 40
Beam overall	6'1"		



Saloon & cockpit



3 cabins - Aft galley version  
Private swim platform option



4 cabins - Forward galley version  
Private swim platform option



5 cabins - Forward galley version

SAILING YACHTS : 380 | 40 | 42 | 450 S | 450 F | 46 | 50 | 52 S | 52 F | 560 | 620 | SEVENTY 7

MOTOR YACHTS : 630 MY | SEVENTY 8

# SEVENTY8

MOTOR YACHT



## PERFORMANCES

### Engine

Standard: Volvo D11-510 CV  
Option: JOHN DEER N13-580 HP

### Cruising speed

(Consumption 40L/H)

Volvo D11: 11,1 knots

John Deer: 11,2 knots

### Maximum speed

Volvo D11: 16,9 knots

John Deer: 20 knots

### Maximum speed to reach 4 000 miles of autonomy

Volvo D11: 8 knots

John Deer: 9 knots

SAILING YACHTS : 380 | 40 | 42 | 450 S | 450 F | 46 | 50 | 52 S | 52 F | 560 | 620 | SEVENTY 7

MOTOR YACHTS : 630 MY | SEVENTY 8

# LAGOON CUSTOM

## Lagoon Custom: bespoke catamarans

CNB shipyard has been building Lagoon catamarans of over 50 feet since 1999. It therefore seemed logical for Lagoon, a world leader in building cruising catamarans, and CNB yacht builders to join forces and develop a new generation of catamarans for their respective clients – bigger, better, more “CNB” superyachts...

With expertise in both aluminium and high-tech composite, CNB shipyard is one of only a handful of manufacturers that allows its clients to choose the material best suited to their sailing plan.

The biggest names in naval architecture have joined forces with Lagoon to design these sail or motor-driven super-catamarans, including Marc Van Peteghem and Vincent Lauriot Prévost, Philippe Brand, Bill Dixon and Berret-Racoupeau Yacht Design.

Several projects drawn up for Lagoon Custom have attracted potential clients, with discussions on specifications and costs are available on request.

**[www.lagoon-custom.com](http://www.lagoon-custom.com)**



CNB 83' - Briand Yacht Design



CNB 100' - VPLP



CNB 160' - Berret Racoupeau Yacht Design



## Lagoon on the upcoming Boat Shows

YACHTING FESTIVAL DE CANNES	FRANCE	SEPTEMBER 11 to 16, 2018	40, 42, 50, 52 F, 630 MY, SEVENTY 7
SOUTHAMPTON BOAT SHOW	UNITED-KINGDOM	SEPTEMBER 14 to 23, 2018	40, 450 F, 630MY
NEWPORT INTERNATIONAL BOAT SHOW	UNITED STATES	SEPTEMBER 14 to 17, 2018	40, 450 F
GENOA BOAT SHOW	ITALIA	SEPTEMBER 20 to 25, 2018	40
SOUTH CALIFORNIA BOAT SHOW	UNITED STATES	SEPTEMBER 20 to 23, 2018	40, 42, 50, 380, 450 F
GRAND PAVOIS DE LA ROCHELLE	FRANCE	SEPTEMBER 26 to OCTOBER 1, 2018	40, 42
ANNAPOLIS BOAT SHOW	UNITED STATES	OCTOBER 4 to 8, 2018	40, 42, 50, 380, 450 F

# MAJOR SHOWS



# Press Contacts

## Lagoon media website

[www.cata-lagoon.com/media](http://www.cata-lagoon.com/media)

## Press contacts:

Alexandre Dauberville

[a.dauberville@cnb.fr](mailto:a.dauberville@cnb.fr) / +33 (0)5 57 80 98 87

Cécile Fouilhoux

[c.fouilhoux@cnb.fr](mailto:c.fouilhoux@cnb.fr) / +33 (0)5 57 80 94 87

## Contacts





LAGOON

162, quai de Brazza  
CS 81217  
33072 Bordeaux Cedex - France  
Tel. +33 (0) 557 80 92 80  
E-mail : [info@cata-lagoon.com](mailto:info@cata-lagoon.com)

**[www.cata-lagoon.com](http://www.cata-lagoon.com)**